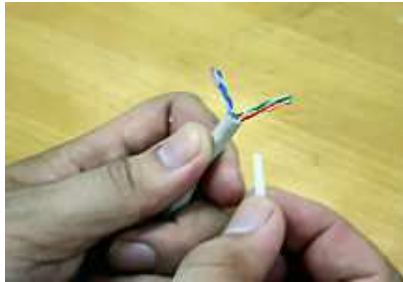




1 Remove 3 cm jacket



2 Cut the cross-separator



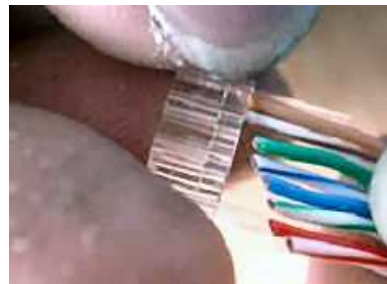
3 spread the wires



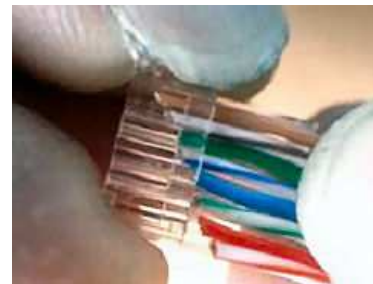
4 Arrange the wires



5 Cut the wires in 45°



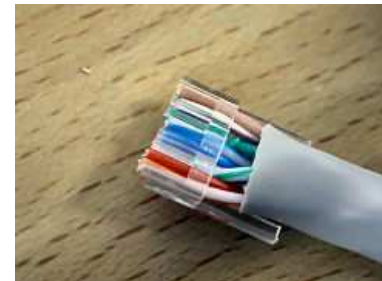
6 Insert wires into the loading bar



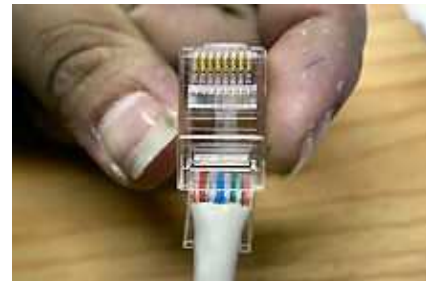
7 Cut all wires flush



8 Verify all wires are flush



9 Insert loading bar into the plug



10 Push cable deep into the plug



11 Crimp plug

