

SOHO Wall Mount Cabinets



Description

HCS DataLine series includes a wide range of high quality racks, cabinets and enclosures, specially designed for structured premise cabling in local area networks (LANs), including distribution and equipment, cross connect cabinets and racks, splice boxes, climate control and many more components for both copper and fiber optic cabling systems.

HCS DataLine 21 SOHO Wall Mount Cabinets are suitable mainly for office environments & equipment rooms, having an attractive design combined with a long-lasting, solid & stable construction, guaranteed by the HCS DataLine Logo & Trademark.

Applications

The special design of HCS DataLine 21 Wall Mount Cabinets allows the use of a large variety and types of accessories, including 19" panels, hubs and active equipment, fixed and/or sliding shelves, fan units, power strips, pulleys, grounding and potential equalization bus bars, lighting units, stacking kits, floor fixing kits, cable management panels, and many other 19" devices and accessories

Qualifications and Approvals

HCS DataLine 21 Wall Mount Cabinets are supported by HCS DoubleSafe™ QA Program and they comply to the following standards:

General	Steel Sheets	Powder Coating	Mechanical	Assembly	IT equipment safety	Fan Unit & Power Strips
<ul style="list-style-type: none"> TS EN 60297-3-100/101/102 DIN 41494 TS EN 60529-1 IP20 (Optional IP 42) 	<ul style="list-style-type: none"> DIN EN 10130-91 DIN EN 10327 EREĞLİ 6112 	<ul style="list-style-type: none"> DIN 67530 ASTM D 2796 ASTM D 3451 	<ul style="list-style-type: none"> TS EN 61587-1 	<ul style="list-style-type: none"> TS EN 60917-2-1/-2 	<ul style="list-style-type: none"> TS EN 60950-1 IEC 60364-7-707 	<ul style="list-style-type: none"> TS EN 60439-1 TS EN 62208

SOHO Wall Mount Cabinets

**Benefits & Features**

- ❑ Solid and stable construction- providing support for large loads.
- ❑ Aesthetic & attractive design - for use in open office environments.
- ❑ Flat packed design option- providing minimal storage space and saving transportation costs.
- ❑ Large cable spaces - enabling easy and comfortable installation of many cables.
- ❑ Sophisticated cable channeling - enabling concealed cords routing.
- ❑ Clear u-marking inside the cabinets - enabling easy & simple profile installation planning.
- ❑ Vented top cover- allows passive ventilation.
- ❑ PVC stoppers - avoid metal surface noise while side panels are mounted.

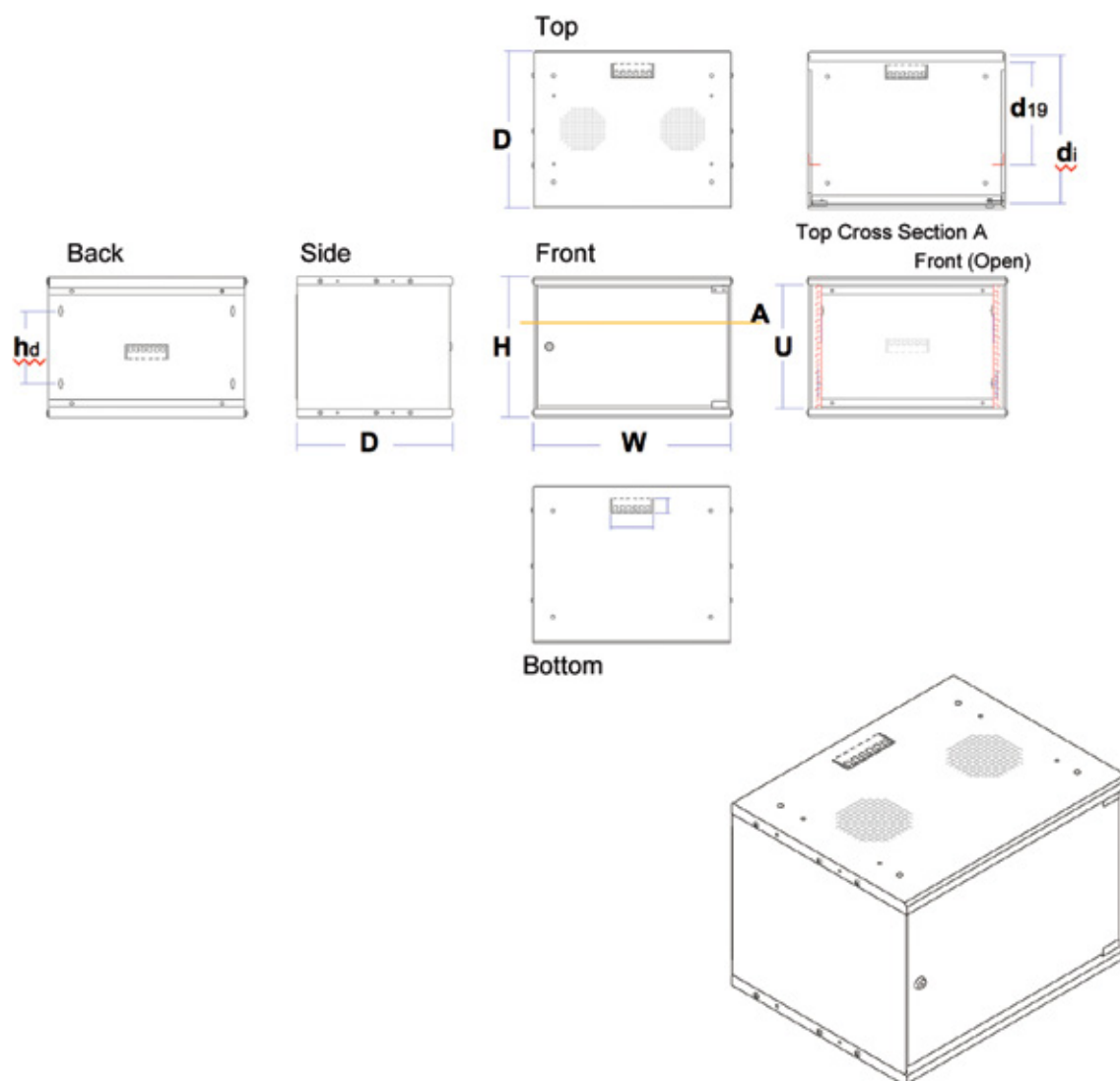
SOHO Wall Mount Cabinets



General Properties

Material of Construction	Sheet & Galvanized steel. 1.0/1.2/1.5 mm thickness.
Paint and Color	Special steel finish with electrostatic powder coat, RAL 7035 grey. Other colors available upon request.
Front Door	Smoked, secured and tempered glass, 4 mm. thickness. Interchangable (Left&right). 150 degree opening for single use.
Side Panels	Complete metal, screwed to top and bottom chasis.
Rear Panel	Complete metal. Mounting plate supported with C form bending. 37x110 mm cable entry hole (plate or brush mountable).
Top Chasis	Monoblock, Fx form construction. Fan tray mountable. 37x110 mm cable entry hole (plate or brush mountable).
Bottom Chasis	Monoblock, Fx form construction. 37x110 mm cable entry hole (brush mountable)
19" profiles	2 units in the front. U-marked.
Vertical Cable Organizer	None.
Front Door Lock	High quality, single point cylindrical locking mechanizm.
Loading Capacity	25 kg max. (TS EN 60297-1)

SOHO Wall Mount Cabinets



Ordering Information

HCS P/N	Description	Internal Height mm	Dimensions			Net Weight Kg	Notes
			Width mm	Depth mm	Height mm		
C21-00553	5U 19" SOHO Wall Mount Cabinet	275	520	300	280	9,0	
C21-00753	7U 19" SOHO Wall Mount Cabinet	361	520	300	366	10,0	
C21-00953	9U 19" SOHO Wall Mount Cabinet	449	520	300	454	11,5	
C21-01253	12U 19" SOHO Wall Mount Cabinet	584	520	300	589	13,0	
C21-00554	5U 19" SOHO Wall Mount Cabinet	275	520	400	280	10,0	
C21-00754	7U 19" SOHO Wall Mount Cabinet	361	520	400	366	11,5	
C21-00954	9U 19" SOHO Wall Mount Cabinet	449	520	400	454	13,5	
C21-01254	12U 19" SOHO Wall Mount Cabinet	584	520	400	589	16,5	