

Description

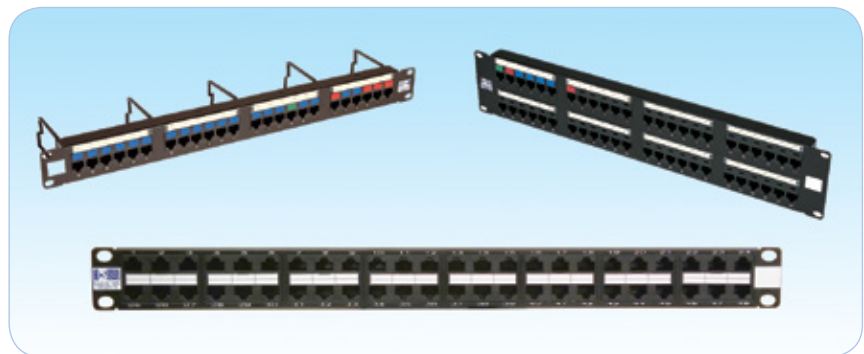
HCS DataLink 100E unshielded copper RJ-45 patch panel series includes a wide range of high performance Category 5E panels, ranging from 24 to 72 ports, specially designed for structured premise cabling in local area networks (LANs).

HCS DataLink 100E panels are available with fixed 6-port PCB units, providing 24, 48 or 72 ports. HCS DataLink 100E panels are available with 110 back interconnection blocks. All panels fully conform to and provide a substantial margin above all ANSI/TIA-568.2-D Category 5E, CENELEC EN 50173 and ISO/IEC-11801 (2nd Edition) requirements. The HCS Logo and the DataLink 100E Trademark ensure long lasting high-performance and full support of all relevant applications, including 1000BASE-T (Gigabit-Ethernet).

Applications

HCS DataLink 100E unshielded copper RJ-45 patch panels are used for horizontal distribution or equipment terminations in telecommunications rooms and for interconnection terminations in consolidation points, and they fully support all relevant LAN applications, including the following protocols:

- ✓ 1000BASE-T Gigabit Ethernet
- ✓ ATM 155
- ✓ TP-PMD
- ✓ 100BASE-T Fast Ethernet
- ✓ 100BASE-T2
- ✓ 100BASE-T4
- ✓ 100BASE-TX
- ✓ Token Ring 100 Mbps
- ✓ ATM 52
- ✓ ATM 25
- ✓ 10BASE-T Ethernet
- ✓ Token Ring 4 Mbps and 16 Mbps
- ✓ Broadband and Baseband Video
- ✓ ISDN Basic and Primary Access
- ✓ 1BASE-5 Starlan
- ✓ ISALAN
- ✓ ITU V.21 and X.11



Qualifications and Approvals

HCS DataLink 100E panels are supported by the Century™ Lifetime Warranty and by the DoubleSafe™ QA program as a part of complete HCS cabling system. HCS DataLink 100E panels comply to the following standards:

TRANSMISSION

- ✓ ANSI/TIA/EIA-568-A-5
- ✓ ANSI/TIA-568.2-D
- ✓ ISO/IEC-11801

EMC

- ✓ EN-55022, Class B (Europe)
- ✓ FCC Part 15, Subpart J, Class A (USA)

SAFETY

- ✓ UL94 V-0 plastic materials
- ✓ Zero-halogen in LSOH constructions.

Benefits & Features

- ➔ Exceptional material properties and design - Providing a unique Century™ Lifetime Warranty.
- ➔ Integrated full installation accessories (supplied free of charge), including labels and icons, clip organizers and T-raps - Providing a simple and elegant cable termination and identification.
- ➔ Optional plastic front panels - Providing custom color selection.
- ➔ Detailed installation manual in English and Turkish - Providing clear and comprehensive instructions.
- ➔ Optional back-side cable management with clip organizer and trap connection - Providing simple and easy cable handling.
- ➔ Exceeding Category 5E performance - Providing full support to Gigabit Ethernet.
- ➔ High quality metal casing - Providing excellent EMC (Electro Magnetic Compatibility), minimizing radiation and maximizing noise immunity.
- ➔ Robust and installer-friendly design - Providing reduced installation and operating costs
- ➔ Modular and expandable comprehensive product range - Providing up to 72 ports in a single panel.
- ➔ Compatible with 22-26 AWG solid or stranded conductors - Providing support to a wider range of cabling types.
- ➔ Available in T568A, T568B or Universal pin/pair assignment - Providing a wider product range.
- ➔ Unique DoubleSafe™ Quality Assurance Program - Providing lowest rejection rate available.

GENERAL PROPERTIES

Wire Size Range	22 to 26 AWG, Solid or stranded (7)
Material of Construction	Galvanized Steel.
Paint and Standard Color	Black, Powder paint finish or plastic front.
Connector Module Holder	High impact, Flame-retardant plastic compound, UL 94 V-0.
Housing Material - Jack & IDC	High impact FR plastic rated UL 94 V-0.
Jack Spring Contact Coating	1.27µm (50µ-Inch) hard Gold over 2.54µm (100µ-Inch) Nickel plating
Plug Retention Force	14 Kgf (140N) min.
Plug to Jack Contact Force	100 grams min. (using HCS approved plug).
IDC Terminations Cycles	200 min.
IDC Type	Gas tight
Plug Insertion Durability	750 mating cycles
Storage Temperature Range	-40 to +70C
Operation Conditions	-20 to +60C at 0-90% RH (Non condensing)
Packaging	One unit per box.