

Description

HCS DataLink 250E unshielded copper RJ-45 patch panel series includes high performance Enhanced Category 6 panels specially designed for structured premise cabling in local area networks (LANs).

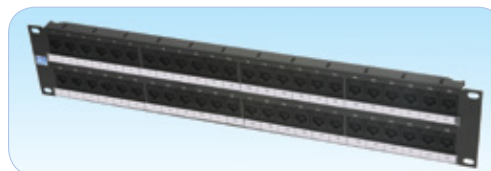
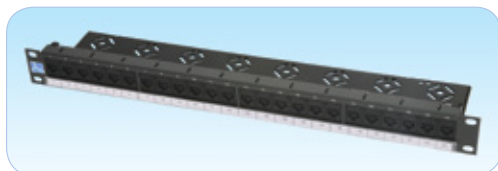
HCS DataLink 250E straight patch panels are ideal for data-centers and installations of high density or which utilize extensive side and end-of-the-rack cable management. The IDC section consists of V-shaped contacts that flex (not fatigue) when terminated. Each RJ45 port features a patented spring loaded shutter and can be Color Coded to match jack outlets with the use of optional port icons. Offering both front and rear labeling options, the patch panel is constructed of cold-rolled steel for additional strength and durability. All panels fully conform to and provide a substantial margin above all ANSI/TIA/568-C.2 and ISO/IEC-11801 (2nd Edition) Category 6 component requirements, tested at the component level.

The HCS Logo and the DataLink 250E Trademark ensure long lasting high-performance and full support of all relevant applications.

Applications

HCS DataLink 250E unshielded copper RJ-45 straight patch panels are mainly used for horizontal distribution or equipment terminations in data-centers, dense telecommunications rooms and for interconnection terminations in consolidation points, and they fully support all relevant LAN applications, including the following protocols:

- | | | |
|---|---|---|
| <input checked="" type="checkbox"/> 1000BASE-T Gigabit Ethernet | <input checked="" type="checkbox"/> Token Ring 100 Mbps | <input checked="" type="checkbox"/> Token Ring 4 Mbps and 16 Mbps |
| <input checked="" type="checkbox"/> ATM 155 | <input checked="" type="checkbox"/> ATM 52 | <input checked="" type="checkbox"/> Broadband and Baseband Video |
| <input checked="" type="checkbox"/> TP-PMD | <input checked="" type="checkbox"/> ATM 25 | <input checked="" type="checkbox"/> ISDN |
| <input checked="" type="checkbox"/> 100BASE-T "Fast Ethernet" | <input checked="" type="checkbox"/> 10BASE-T Ethernet | <input checked="" type="checkbox"/> ISALAN |
| <input checked="" type="checkbox"/> 100BASE-T2 | <input checked="" type="checkbox"/> ISDN Basic and Primary Access | <input checked="" type="checkbox"/> ITU V.21 and X.11 |
| <input checked="" type="checkbox"/> 100BASE-T4 | <input checked="" type="checkbox"/> 1BASE-5 Starlan | <input checked="" type="checkbox"/> 100BASE-TX |



Qualifications and Approvals

HCS DataLink 250E panels are supported by the Century™ Lifetime Warranty and by the DoubleSafe™ QA program as a part of complete HCS cabling system. HCS DataLink 250 panels are tested at the component level and they comply to the following standards:

TRANSMISSION

- ANSI/TIA/568-C.1
- ANSI/TIA/568-C.2
- ISO/IEC-11801

EMC

- EN-55022, Class B (Europe)
- FCC Part 15, Subpart J, Class A (US)

SAFETY

- UL94 V-0 rated plastic materials
- Zero-halogen in LSOH constructions.

Benefits & Features

- Exceptional material properties and design - Providing a unique Century™ Lifetime Warranty.
- Detailed installation manual in English and Turkish - Providing clear and comprehensive instructions.
- Exceeding Category 6 performance - Providing full support to Gigabit Ethernet over Category 5E and Category 6 cabling systems.
- Robust and installer-friendly design - Providing reduced installation and operating costs.
- Compatible with 22-24 AWG solid conductors - Providing support to a wider range of cabling types.
- Unique DoubleSafe™ Quality Assurance Program - Providing lowest rejection rate available.
- Each port features the patented spring-loaded shutter prevents incomplete mating & protects from dust and contaminants.
- Patented IDC V-shaped contacts that flex (not fatigue) when terminated.
- Features pointed IDC towers to speed termination and enhance cable retention.
- Dual color-coding allows for 568 A/B wiring configuration.
- Front and rear port labeling (port sequence 1-48) as well as panel identification label.
- 4 x 6 ganged jack configuration.
- Individually removable patch panel ports.
- Removable cable management shelves ensure bend radius compliance.
- Can be terminated using industry standard punch-down tools.
- RJ45 port which is RJ-11 compatible.
- Molded category identification on each port face as well as optional port identification icons.

GENERAL PROPERTIES

Wire Size Range	22 to 24 AWG, Solid conductors.
Material of Construction	CRS (Cold rolled steel), 1.5mm thickness.
Paint and Standard Color	Black or Gray.
Plastic parts	High impact, Flame-retardant plastic compound, UL 94 V-0.
Housing Material - Jack & IDC	High impact FR plastic rated UL 94 V-0.
Jack spring contact	Phosphor Bronze with 50G* hard Gold over 100G* Nickel plating
Plug Retention Force	50N min.
Plug to Jack Contact Force	100 grams min. (using HCS approved plug).
IDC Terminations Cycles	20 min.
IDC Type	Gas tight
Plug Insertion Durability	750 mating cycles
Storage Temperature Range	-40 to +70C
Operation Conditions	-20 to +60C at 0-90% RH (Non condensing)
Packaging	One unit per box.